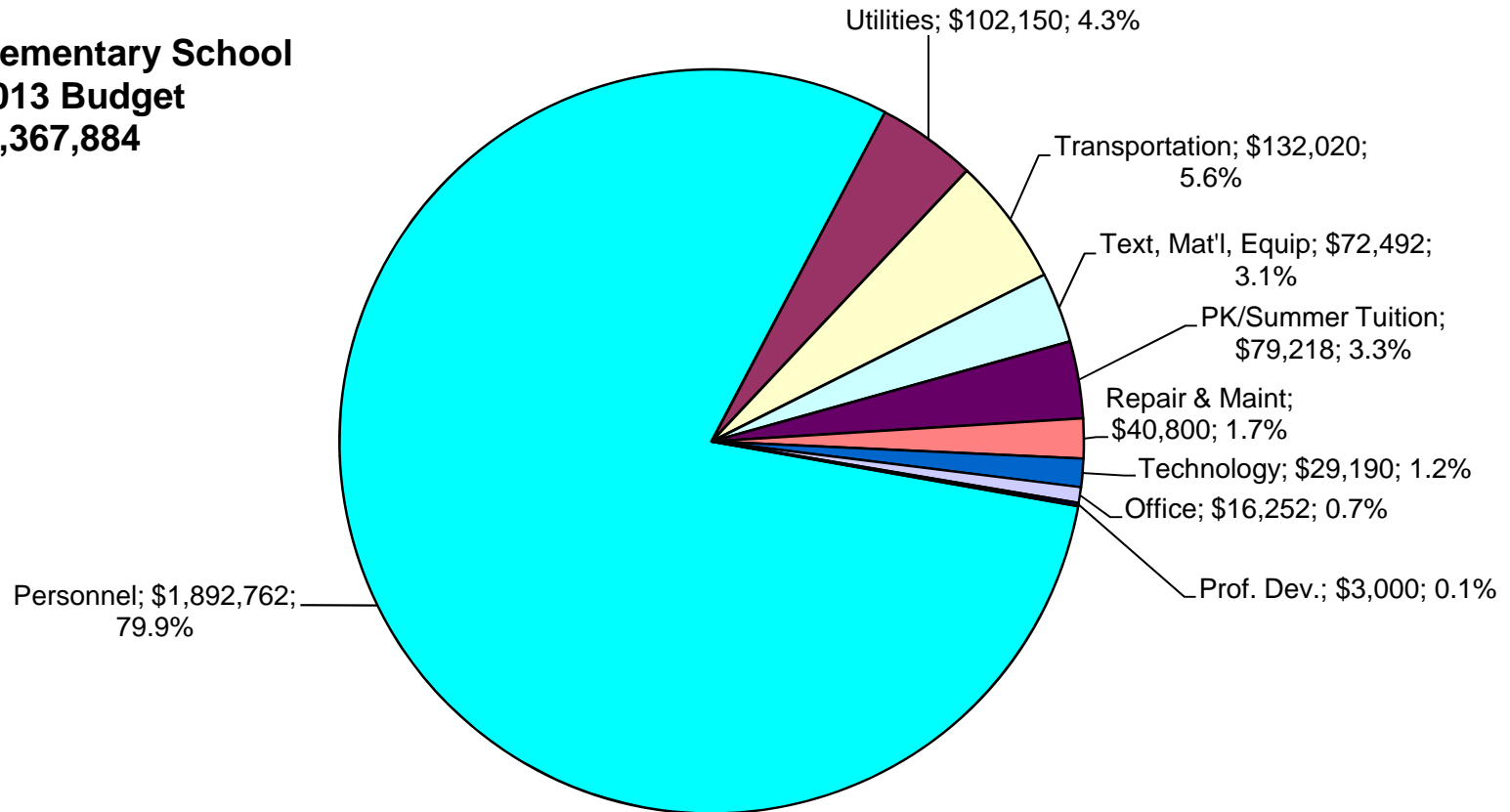


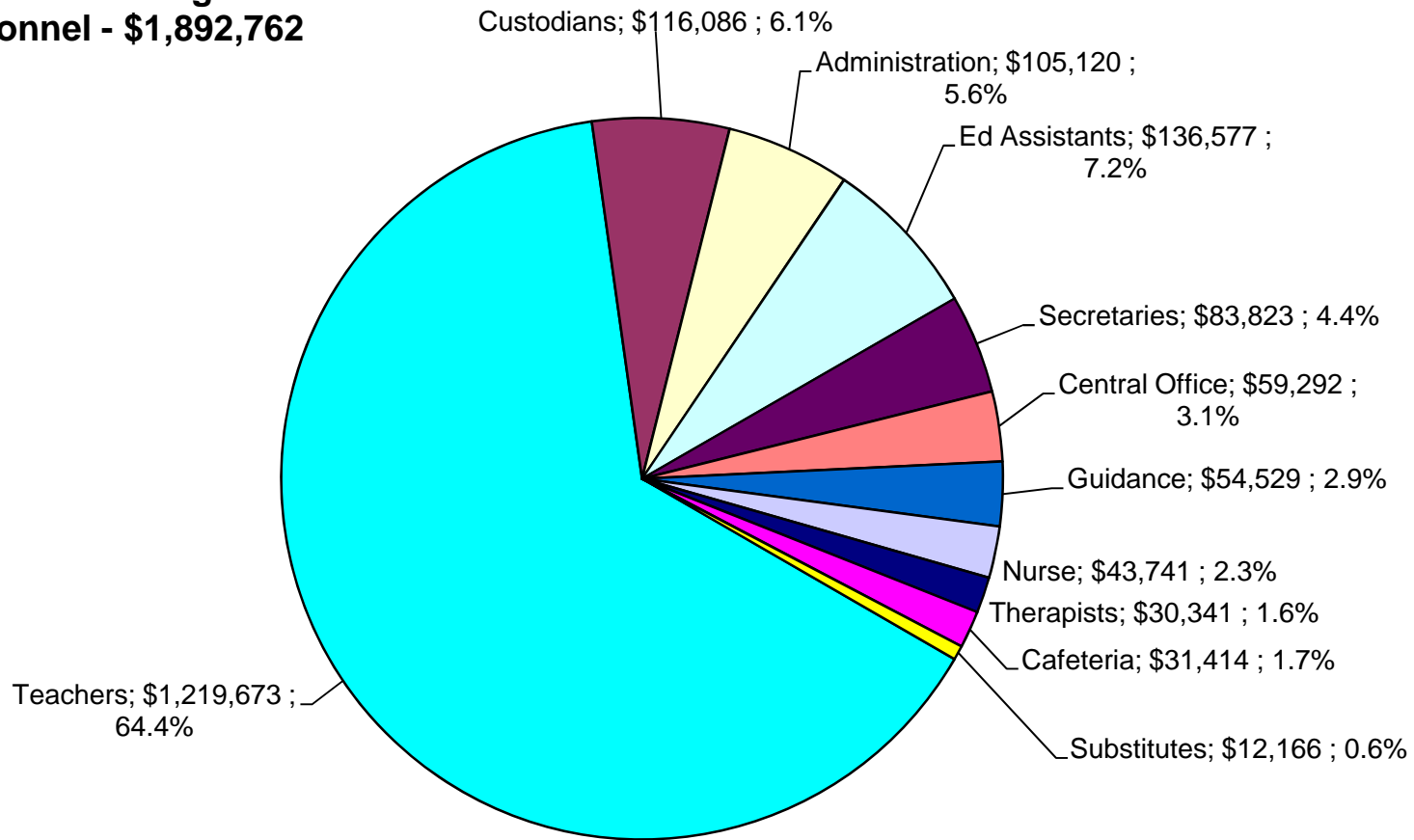
## WHERE EACH DOLLAR GOES - TOTAL BUDGET

**Wellfleet Elementary School  
FY 2013 Budget  
\$2,367,884**



WHERE EACH DOLLAR GOES - PERSONNEL COSTS

**Wellfleet Elementary School  
FY 2013 Budget  
Personnel - \$1,892,762**



WHERE EACH DOLLAR GOES - Regular & Special Education

**Wellfleet Elementary School  
FY 2013 Budget  
Regular Day / SPED  
\$ 2,420,398**

