

NAUSET PUBLIC SCHOOLS

NAUSET REGIONAL & UNION NO. 54 PUBLIC SCHOOLS - ENROLLMENT PROJECTIONS								
COMPARE 11-12 TO 12-13 ACTUAL AND 2013-14 PROJECTED								
20-Nov-12								
						10.1.12		
		PROJECTED		PROJECTED	NESDEC	ACTUAL	PROJECTED	
SCHOOL	GRADE	2011-2012 <sup>1</sup>	12-13 COHORT	2012-2013 <sup>2</sup>	12-13 Forecast	2012-2013	2013-2014 <sup>3</sup>	
STONY	PK	41	41	26	42	31	31	
	K	79	66	66	76	69	76	
	1	76	76	77	79	76	69	
	2	64	83	78	79	78	77	
	3	72	61	63	63	64	78	
EDDY	4	75	74	73	72	74	64	
	5	89	80	77	75	78	74	
	<b>TOTAL &gt;&gt;</b>	<b>496</b>	<b>481</b>	<b>460</b>	<b>486</b>	<b>470</b>	<b>469</b>	
EASTHAM	K	25	30	38	36	41	21	
	1	30	25	26	26	27	42	
	2	34	30	28	30	27	27	
	3	44	35	33	35	37	26	
	4	30	44	44	43	42	37	
	5	44	30	30	30	31	43	
<b>TOTAL &gt;&gt;</b>		<b>207</b>	<b>194</b>	<b>199</b>	<b>200</b>	<b>205</b>	<b>196</b>	
ORLEANS	PK	20	20	23	20	22	24	
	K	30	32	34	54	35	34	
	1	31	26	30	20	30	35	
	2	38	31	32	31	31	30	
	3	22	39	39	40	40	30	
	4	34	22	23	22	26	39	
5	33	34	35	35	33	26		
<b>TOTAL &gt;&gt;</b>		<b>208</b>	<b>204</b>	<b>216</b>	<b>222</b>	<b>217</b>	<b>218</b>	
WELLFLEET	PK	22	22	25	23	16	16	
	K	10	28	29	25	29	12	
	1	18	10	10	10	11	29	
	2	28	18	18	18	19	10	
	3	24	26	28	27	26	20	
	4	18	23	23	25	22	26	
5	17	17	18	18	17	22		
<b>TOTAL &gt;&gt;</b>		<b>137</b>	<b>144</b>	<b>151</b>	<b>146</b>	<b>140</b>	<b>135</b>	
<b>TOTAL K-5 &gt;&gt;&gt;&gt;&gt;&gt;&gt;&gt;&gt;&gt;</b>		<b>1048</b>	<b>1023</b>	<b>1026</b>	<b>1054</b>	<b>1032</b>	<b>1018</b>	
MIDDLE	6	169	180	180	NA	188	168	
	7	193	185	185	NA	200	205	
	8	209	199	199	NA	202	200	
<b>TOTAL &gt;&gt;</b>		<b>571</b>	<b>564</b>	<b>564</b>	<b>NA</b>	<b>590</b>	<b>573</b>	
HIGH	9	251	249	249	NA	245	245	
	10	256	266	266	NA	252	245	
	11	198	256	256	NA	257	252	
	12	255	198	198	NA	208	257	
	SP	5	5	5	NA	8	7	
<b>TOTAL &gt;&gt;</b>		<b>965</b>	<b>974</b>	<b>974</b>	<b>NA</b>	<b>970</b>	<b>1006</b>	
<b>TOTAL 6-12 &gt;&gt;&gt;&gt;&gt;&gt;&gt;&gt;&gt;&gt;</b>		<b>1536</b>	<b>1538</b>	<b>1538</b>	<b>NA</b>	<b>1560</b>	<b>1579</b>	
<b>GRAND TOTAL PK-12 &gt;&gt;&gt;&gt;</b>		<b>2584</b>	<b>2561</b>	<b>2564</b>	<b>NA</b>	<b>2592</b>	<b>2597</b>	

NOTE 1 - Source - X2 District Enrollment Summary Report October 1, 2011

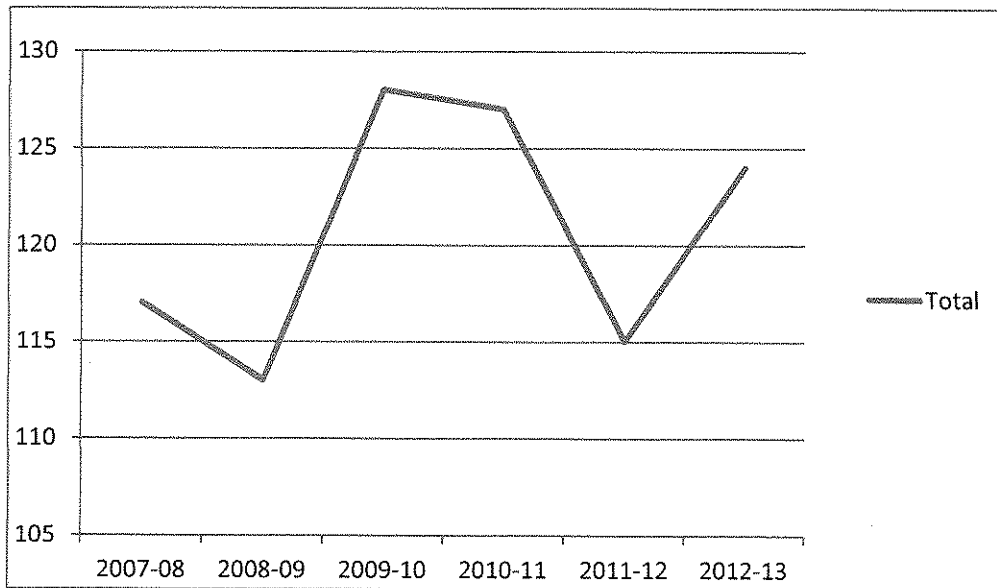
NOTE 2 - Source - Cohort Survival Data & Principal Projections made in November 2011

NOTE 3 - Source - Principal / Central Office projections based on enrollment trends over last 3 years

# WELLFLEET

## Massachusetts Department of Elementary and Secondary Education Enrollment By Grade

<u>YEAR</u>	<u>K</u>	<u>1</u>	<u>2</u>	<u>3</u>	<u>4</u>	<u>5</u>	<u>Total</u>
2012-13	29	11	19	26	22	17	124
2011-12	10	18	28	24	18	17	115
2010-11	18	31	25	17	18	18	127
2009-10	31	22	19	17	15	24	128
2008-09	22	18	17	15	23	18	113
2007-08	20	18	16	25	21	17	117



**WELLFLEET ELEMENTARY SCHOOL**  
**Enrollment Summary**  
**October 1, 2012**

**Grade Level Enrollment**

Pre-K	16
Kindergarten	29
Grade 1	11
Grade 2	19
Grade 3	26
Grade 4	22
Grade 5	17
Total	140

**Gender**

Male	57
Female	83

**Special Services**

ADA 504 Plans	12
Title I Gr.1-5 Total	19

**Attendance**

Average Daily Attendance 97.30%

**Race**

White	126
Black or African American	3
White and Asian	0
Native Hawaiian or Other Pacific Islander	2
White & Black or African American	3
White (Hispanic/Latino)	2
Black or African American Hispanic/Latino	1
Black or African American & Asian & American Indian or Alaska Native	1
Black or African American & Asian & American Indian or Alaska Native	2

**Low Income**

41

**Special Education**

Pre-School	5
Grades K-5	10
Student in Outplacement	0

**Limited English Proficiency (LEP)**

0

(1st year in US - Fluent in English)

**First Language Not English (FLNP)**

0

**Immigrant**

1

**Nature of Disability**

Communication	2
Physical	1
Senoring Hearing	1
Specific Learning Disability	3
Autisim	1
Neurological	0
Development Delay	7